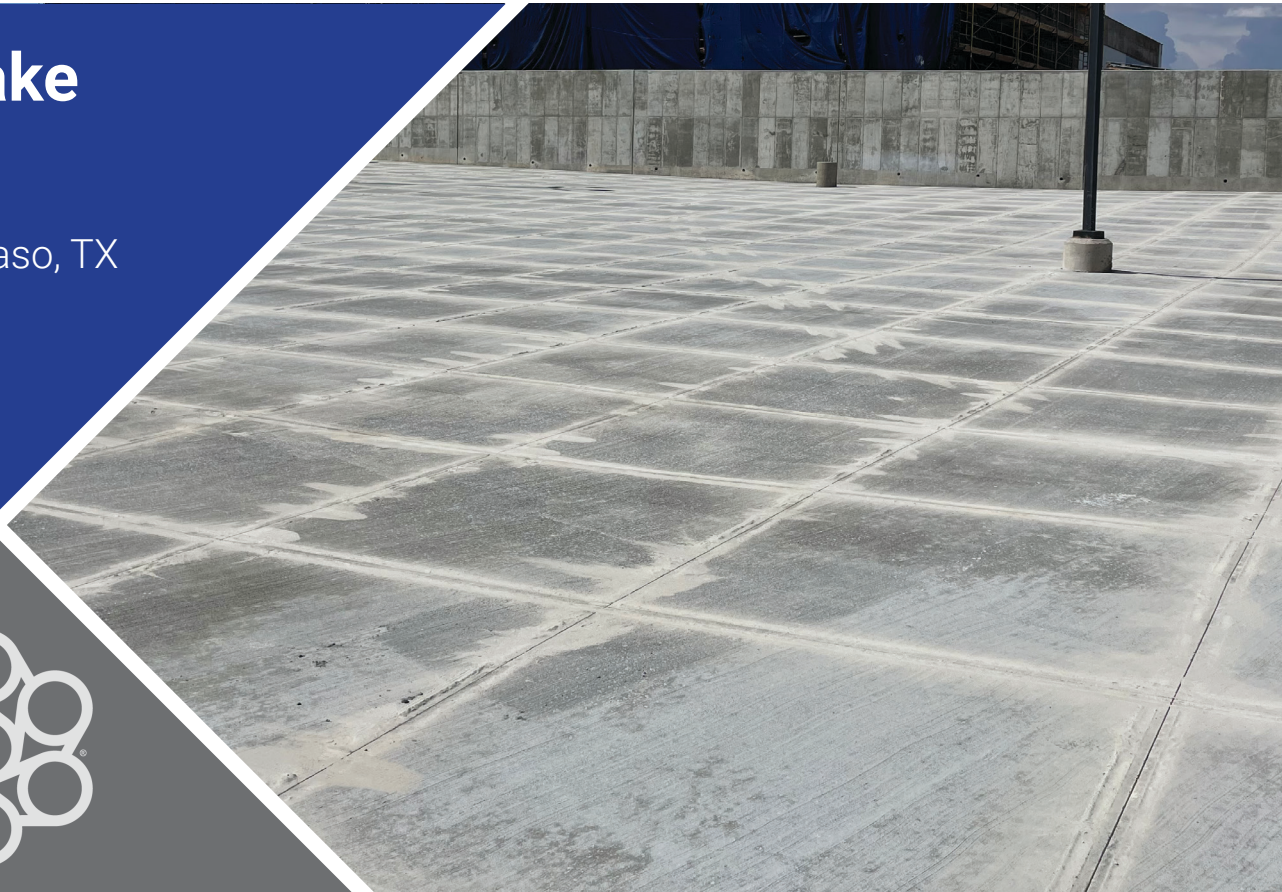


# Stone Lake

**Date:** 2022

**Location:** El Paso, TX



## Technical Specifications

**Pavement Thickness:** 5.5"

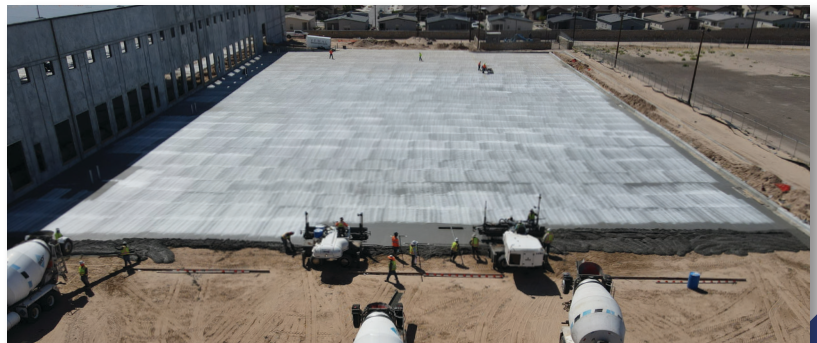
**Fiber Reinforcement:** FORTA-FERRO® 2-1/4"

**Doasge:** 4.0 lb/cu yd

**Joint Spacing:** 6ft x 6ft

**Total Project Size:** 600,000 sq ft

**Finishing Method:** Somero Broom & Cure



This high-volume parking lot was designed using the OptiPave System with FORTA-FERRO macro synthetic fibers to provide the owner with a **durable, sustainable, cost effective concrete pavement**. This proprietary design system, significantly **reduces the amount of curling** and prevents both edges of the panel from being loaded simultaneously. This optimized design permits **significant reduction in thickness** while providing owners with a durable concrete pavement that requires **minimal maintenance**.

TCPavements, OptiPave System for Industrial Pavements, is licensed in the United States by PNA in collaboration with FORTA.